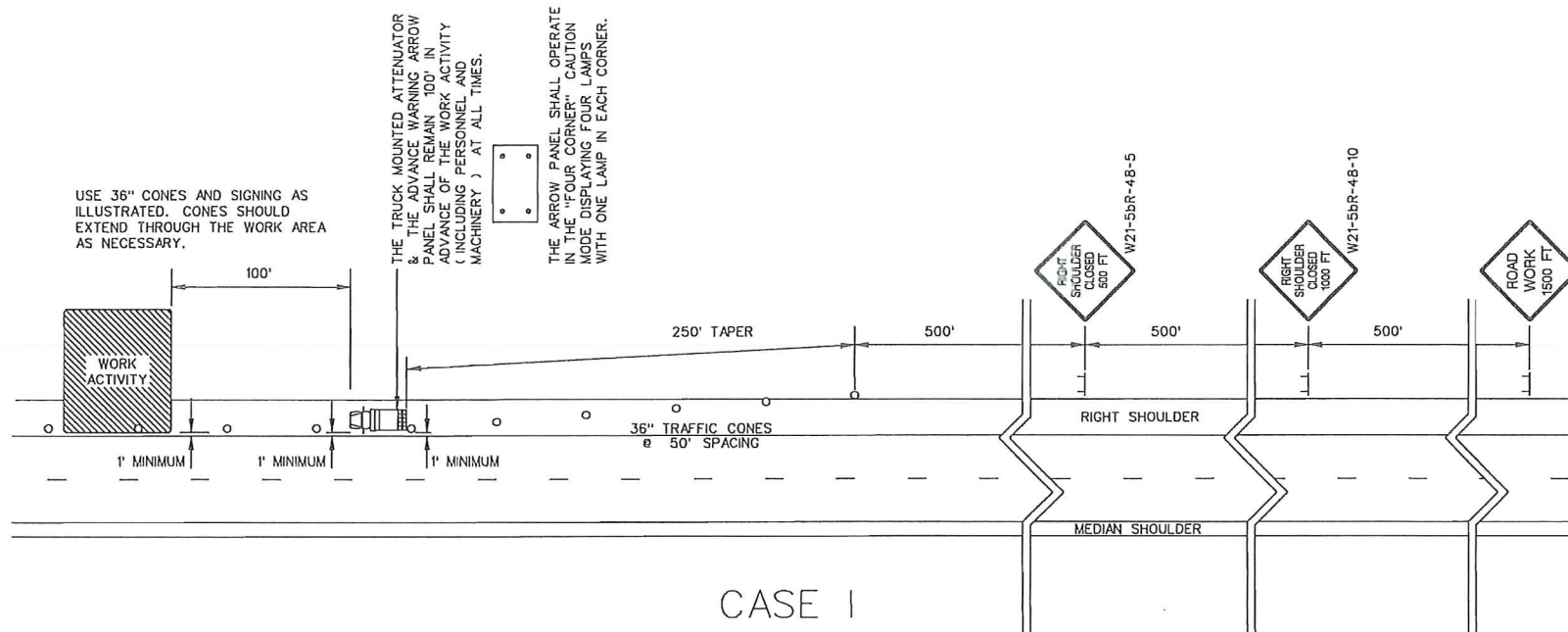


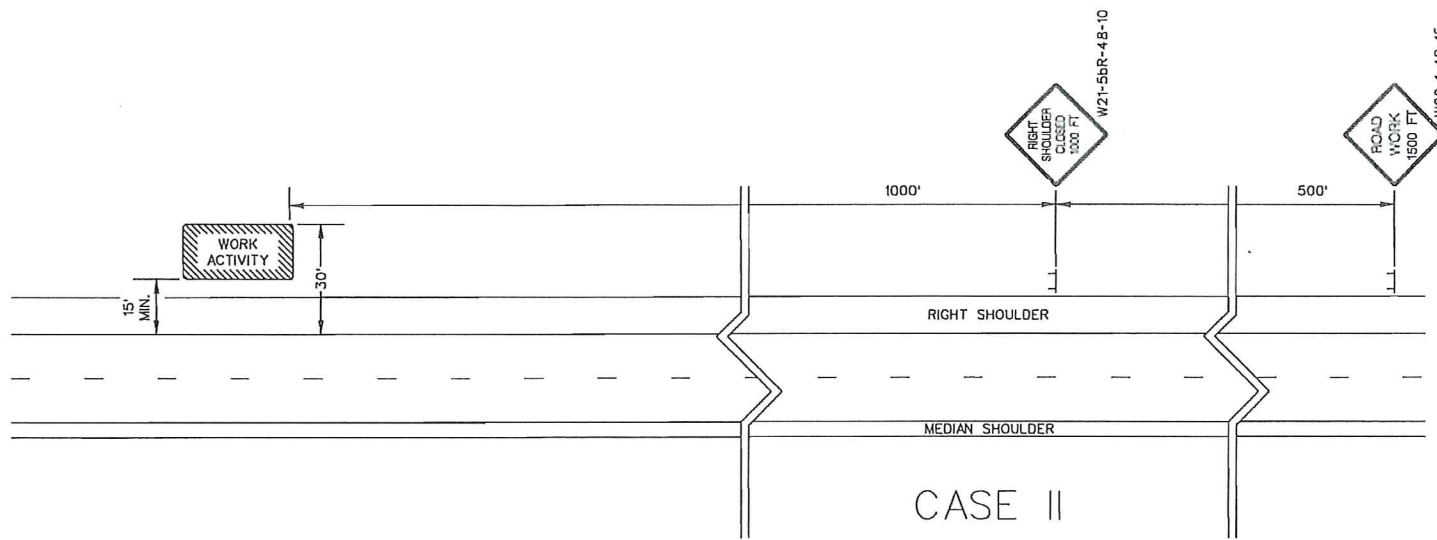
REFERENCES

GENERAL NOTES

- ALL SIGN LOCATIONS ARE TO BE MEASURED FROM THE WORK AREA. WORK LIMITS FOR THE PROJECT WILL BE DETERMINED BY THE ENGINEER AND AS INDICATED IN THE CONTRACT.
 - INSTALL ADVANCE WARNING SIGNS MOUNTED ON PORTABLE SIGN SUPPORTS NO LESS THAN 4 FEET FROM THE NEAR EDGE OF THE SIGN TO THE NEAR EDGE OF AN ADJACENT TRAVEL LANE ON ROADWAYS WITH EARTH SHOULDERS AND NO LESS THAN 6 FEET FROM THE NEAR EDGE OF THE SIGN TO THE NEAR EDGE OF AN ADJACENT TRAVEL LANE ON ROADWAYS WITH PAVED SHOULDERS. WHEN CURB & GUTTER IS PRESENT, INSTALL THE SIGN NO LESS THAN 2 FEET FROM THE NEAR EDGE OF THE SIGN TO THE FACE OF THE CURB.
 - SPACINGS INDICATED ARE FOR NORMAL CONDITIONS; ADJUSTMENTS MAY BE REQUIRED DUE TO HORIZONTAL AND/OR VERTICAL ALIGNMENTS OR OTHER SIGHT DISTANCE RESTRICTIONS.
 - ALL SIGNS MOUNTED ON PORTABLE SIGN SUPPORTS SHALL HAVE A MINIMUM MOUNTING HEIGHT OF 5 FEET FROM THE GROUND TO THE BOTTOM OF THE SIGN. ALL SIGNS MOUNTED ON GROUND MOUNTED U-CHANNEL POSTS OR SQUARE STEEL TUBE POSTS SHALL HAVE A MINIMUM MOUNTING HEIGHT OF 7 FEET FROM THE GRADE ELEVATION OF THE NEAR EDGE OF THE ADJACENT TRAVEL LANE TO THE BOTTOM OF THE SIGN UNLESS OTHERWISE DIRECTED BY THE DEPARTMENT. MOUNT ALL SIGNS STRAIGHT AND LEVEL AND WITH THE FACE OF THE SIGNS PERPENDICULAR TO THE SURFACE OF THE ROADWAY.
 - REFLECTORIZE ORANGE ADVANCE WARNING SIGNS AND ANY ORANGE AREAS OF A MULTI-COLORED ADVANCE WARNING SIGN WITH A FLUORESCENT ORANGE COLORED PRISMATIC RETROREFLECTIVE SHEETING. REFLECTORIZE WHITE REGULATORY SIGNS AND ANY WHITE AREAS OF A MULTI-COLORED ADVANCE WARNING SIGN WITH A WHITE COLORED PRISMATIC RETROREFLECTIVE SHEETING.
 - ALL TRAFFIC CONTROL DEVICES SHALL COMPLY WITH ALL NCHRP REPORT 350 REQUIREMENTS AND SHALL REQUIRE APPROVAL BY THE DEPARTMENT. ONLY THOSE TRAFFIC CONTROL DEVICES INCLUDED ON THE "APPROVED PRODUCTS LIST FOR TRAFFIC CONTROL DEVICES IN WORK ZONES" ARE CONSIDERED ACCEPTABLE FOR USE. THIS LIST MAY BE ACCESSED ON THE DEPARTMENT'S WEB SITE AT: www.scdot.org.
 - THE CONTRACTOR SHALL PROVIDE AND UTILIZE ANY SPECIAL SIGN MOUNTING ASSEMBLIES AND HARDWARE THAT MAY BE NECESSARY FOR INSTALLING AND MOUNTING SIGNS IN AREAS OF CONCRETE MEDIAN BARRIER, BRIDGE PARAPET WALLS OR DOUBLEFACED GUARDRAIL.
 - THE PRIMARY TRAFFIC CONTROL DEVICES UTILIZED FOR DAYTIME SHOULDER CLOSURES ARE 36" CONES. THE PRIMARY TRAFFIC CONTROL DEVICES UTILIZED FOR NIGHTTIME SHOULDER CLOSURES ARE PORTABLE PLASTIC DRUMS. DURING DAYTIME SHOULDER CLOSURES, 42" OVERSIZED CONES MAY BE SUBSTITUTED FOR 36" CONES. DURING NIGHTTIME SHOULDER CLOSURES, 42" OVERSIZED CONES ARE PROHIBITED FOR USE. IF THIS TRAFFIC CONTROL SETUP EXTENDS INTO THE HOURS OF DARKNESS, REPLACE ALL CONES, 36" OR 42" OVERSIZED, WITH PORTABLE PLASTIC DRUMS.
 - THE 36" CONES UTILIZED DURING DAYLIGHT HOURS ARE NOT REQUIRED TO BE REFLECTORIZED. REFLECTORIZE ALL 42" OVERSIZED CONES UTILIZED DURING DAYTIME SHOULDER CLOSURES WITH TYPE III FLEXIBLE PRISMATIC RETROREFLECTIVE SHEETING UNLESS OTHERWISE DIRECTED BY THE DEPARTMENT. REFLECTORIZE ALL PORTABLE PLASTIC DRUMS WITH TYPE III FLEXIBLE PRISMATIC RETROREFLECTIVE SHEETING UNLESS OTHERWISE DIRECTED BY THE DEPARTMENT.
 - THE DEPARTMENT PROHIBITS CONDUCTING WORK ON PRIMARY AND SECONDARY ROUTES WITHIN 1' OF THE NEAR EDGE OF THE ADJACENT TRAVEL LANE UNDER A SHOULDER CLOSURE. ALL WORK THAT MAY REQUIRE THE PRESENCE OF EQUIPMENT, PERSONNEL, MATERIALS OR WORK VEHICLES WITHIN 1' OF THE NEAR EDGE OF THE ADJACENT TRAVEL LANE SHALL BE CONDUCTED UNDER A LANE CLOSURE.
- CASE I: WHENEVER ANY PORTION OF THE SHOULDER AREA WITHIN 15' BUT NOT CLOSER THAN 1' OF THE NEAR EDGE OF THE ADJACENT TRAVEL LANE MUST BE OCCUPIED BY EQUIPMENT, PERSONNEL, MATERIALS OR WORK VEHICLES TO CONDUCT THE WORK, INSTALL AND MAINTAIN THE SIGNING AND TRAFFIC CONTROL DEVICES AS ILLUSTRATED.
- CASE II: WHENEVER THE WORK IS CONDUCTED BEYOND 15' BUT WITHIN 30' OF THE NEAR EDGE OF THE ADJACENT TRAVEL LANE, INCLUDING THE PRESENCE OF EQUIPMENT, PERSONNEL, MATERIALS OR WORK VEHICLES, INSTALL AND MAINTAIN THE SIGNING AND TRAFFIC CONTROL AS ILLUSTRATED.
- CONDUCT THE WORK IN SUCH A MANNER THAT WILL NOT REQUIRE ENCROACHMENT OF TRAFFIC CONTROL DEVICES, EQUIPMENT, PERSONNEL, MATERIALS OR ANY WORK RELATED VEHICLES WITHIN 1' OF THE NEAR EDGE OF THE ADJACENT TRAVEL LANE.
 - PLACE THE TRUCK MOUNTED ATTENUATOR AT A LOCATION 100' IN ADVANCE OF THE WORK ACTIVITY AND NO CLOSER THAN 1' FROM THE NEAR EDGE OF THE ADJACENT TRAVEL LANE.
 - FOR A CASE I SCENARIO IN THE RIGHT SHOULDER AREA, ADJUST THE TAPER AS NECESSARY TO FIT THE WIDTH OF THE SHOULDER WHILE MAINTAINING THE REQUIRED 250' TAPER LENGTH.
 - IF WORK IS BEING CONDUCTED SIMULTANEOUSLY AT TWO DIFFERENT LOCATIONS AT THE SAME TIME UNDER CASE I SHOULDER CLOSURES, SEPARATE THE TWO LOCATIONS BY NO LESS THAN 1 MILE FROM THE END OF THE FIRST CASE I CLOSURE THAT A MOTORIST WILL ENCOUNTER TO THE BEGINNING OF THE TAPER OF THE SECOND CASE I CLOSURE. A MINIMUM SEPARATION DISTANCE OF ONE-HALF MILE IS RECOMMENDED BETWEEN SHOULDER CLOSURES WHEN ONE OR BOTH SHOULDER CLOSURES IS A CASE II CLOSURE.
 - THE DEPARTMENT RESERVES THE RIGHT TO RESTRICT WORK OPERATIONS AND/OR WITHHOLD THE MONTHLY ESTIMATE IF THE TRAFFIC CONTROL IS NOT PROPERLY INSTALLED AND MAINTAINED AS DIRECTED BY THE STANDARD SPECIFICATIONS, THE SPECIAL PROVISIONS, THE STANDARD DRAWINGS, THE PLANS AND/OR THE ENGINEER.
 - THIS TYPICAL TRAFFIC CONTROL SETUP APPLIES TO THE INSTALLATION OF SHOULDER CLOSURES IN THE RIGHT SHOULDER AREAS OF PRIMARY AND SECONDARY ROADWAYS.



CASE I



CASE II

PORTABLE TRUCK MOUNTED ATTENUATOR

- UTILIZE A TRUCK MOUNTED ATTENUATOR ATTACHED TO THE REAR OF A TRUCK WITH A MINIMUM GROSS VEHICULAR WEIGHT (GVW) OF 15,000 POUNDS (ACTUAL WEIGHT). IF THE ADDITION OF SUPPLEMENTAL WEIGHT TO THE VEHICLE AS BALLAST IS NECESSARY, CONTAIN THE MATERIAL WITHIN A STRUCTURE CONSTRUCTED OF STEEL. CONSTRUCT THIS STEEL STRUCTURE TO HAVE A MINIMUM OF FOUR SIDES AND A BOTTOM. A TOP IS OPTIONAL. BOLT THIS STRUCTURE TO THE FRAME OF THE TRUCK. UTILIZE A SUFFICIENT NUMBER OF FASTENERS FOR ATTACHMENT OF THE STEEL STRUCTURE TO THE FRAME OF THE TRUCK TO ENSURE THE STRUCTURE WILL NOT SEPARATE FROM THE FRAME OF THE TRUCK DURING AN IMPACT UPON THE ATTACHED TRUCK MOUNTED ATTENUATOR. UTILIZE EITHER DRY LOOSE SAND OR STEEL REINFORCED CONCRETE FOR BALLAST MATERIAL WITHIN THE STEEL STRUCTURE TO ACHIEVE THE NECESSARY WEIGHT. THE BALLAST MATERIAL SHALL REMAIN CONTAINED WITHIN THE CONFINES OF THE STEEL STRUCTURE AND SHALL NOT PROTRUDE FROM THE STEEL STRUCTURE IN ANY MANNER.
- LOCATE THE TRUCK MOUNTED ATTENUATOR 100 FEET IN ADVANCE OF THE WORK AREA UNLESS OTHERWISE SPECIFIED.
- PROVIDE, INSTALL AND MAINTAIN THE TRUCK MOUNTED ATTENUATOR AS SPECIFIED BY THE STANDARD SPECIFICATIONS AND AS DIRECTED BY THE ENGINEER.

ADVANCE WARNING ARROW PANEL

ALL ADVANCE WARNING ARROW PANELS SHALL BE 48" x 96" WITH A MINIMUM LEGIBILITY DISTANCE OF 1 MILE. PLACEMENT OF AN ADVANCE WARNING ARROW PANEL MAY REQUIRE ADJUSTMENTS DUE TO HORIZONTAL AND/OR VERTICAL ALIGNMENT OR OTHER SIGHT DISTANCE RESTRICTIONS. THE PANEL FACE SHALL BE NONREFLECTIVE BLACK. ALL ADVANCE WARNING ARROW PANELS SHALL COMPLY WITH THE STANDARD SPECIFICATIONS FOR HIGHWAY CONSTRUCTION, LATEST EDITION.

WHEN AN ADVANCE WARNING ARROW PANEL IS REQUIRED TO OPERATE IN THE CAUTION MODE, THE ADVANCE WARNING ARROW PANEL SHALL DISPLAY THE "FOUR CORNERS" CAUTION MODE WITH ONE LAMP IN EACH CORNER. DISPLAY OF ANY OTHER TYPE OF CAUTION MODE OTHER THAN THE "FOUR CORNERS" CAUTION MODE SUCH AS THE "FLASHING BAR" OR THE "ALTERNATING DIAMOND" CAUTION MODES ARE UNACCEPTABLE AND PROHIBITED.

LEGEND

○ 36" TRAFFIC CONES

WORK ZONE TRAFFIC CONTROL ENGINEER



Signature: *Willie E. McConnell, Jr.*
 DATE: 8/2/12

6			
5			
4			
3			
2			
1	8-12-11	JCS	GENERAL UPDATE
0	8-23-07	JCS	DRAWING NO. UPDATE
#	DATE	CHK	DESCRIPTION

SCDOT
 SOUTH CAROLINA DEPARTMENT OF TRANSPORTATION
 DESIGN STANDARDS OFFICE
 955 PARK STREET
 ROOM 405
 COLUMBIA, SC 29201

STANDARD DRAWING

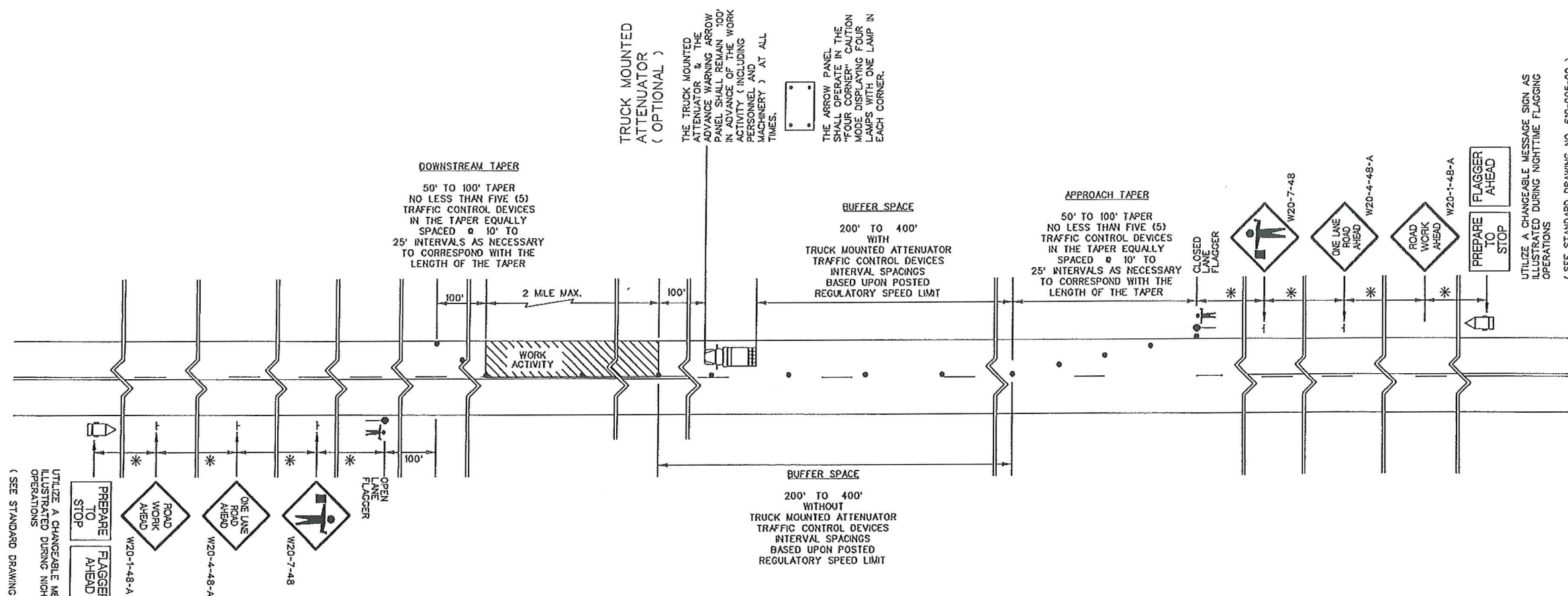
RIGHT SHOULDER CLOSURE (CASE I / CASE II) PRIMARY ROUTES

610-205-00

EFFECTIVE LETTING DATE: *Jan, 2013* THIS DRAWING IS NOT TO SCALE

DRAWING 610-005-10 NOTES

1. SEE STANDARD DRAWING NO. 610-005-00 FOR ALL GENERAL NOTES AND REQUIREMENTS.



UTILIZE A CHANGEABLE MESSAGE SIGN AS ILLUSTRATED DURING NIGHTTIME FLAGGING OPERATIONS
(SEE STANDARD DRAWING NO. 610-005-00)

TABLE A

SIGN PLACEMENT INTERVALS	
SPEED LIMIT	*
# ≤ 35 MPH LOW SPEED	200
# 40 - 50 MPH INTERMEDIATE SPEED	350
# 55 MPH HIGH SPEED	500

* REGULATORY POSTED SPEED LIMIT PRIOR TO BEGINNING WORK

TABLE B

TRAFFIC CONTROL DEVICE SPACING INTERVALS WORK ACTIVITY / BUFFER SPACE AREAS	
SPEED LIMIT	SPACING INTERVALS
≤ 35 MPH	25 FEET
40 - 55 MPH	50 FEET

TRUCK MOUNTED ATTENUATOR (OPTIONAL)
THE TRUCK MOUNTED ATTENUATOR & THE ADVANCE WARNING ARROW PANEL SHALL REMAIN IN ADVANCE OF THE WORK ACTIVITY (INCLUDING PERSONNEL AND MACHINERY) AT ALL TIMES.
THE ARROW PANEL SHALL OPERATE IN THE "FOUR CORNER" CAUTION MODE DISPLAYING FOUR LAMPS WITH ONE LAMP IN EACH CORNER.

UTILIZE A CHANGEABLE MESSAGE SIGN AS ILLUSTRATED DURING NIGHTTIME FLAGGING OPERATIONS
(SEE STANDARD DRAWING NO. 610-005-00)

REFERENCES

WORK ZONE TRAFFIC CONTROL ENGINEER



Signature: *Willie E. McConnell, Jr.*
DATE: 7/27/15

6			
5			
4			
3			
2			
1			
0	1-15-15	JCS	NEW DRAWING
#	DATE	CHK	DESCRIPTION

SCDOT
SOUTH CAROLINA DEPARTMENT OF TRANSPORTATION
DESIGN STANDARDS OFFICE
955 PARK STREET
ROOM 405
COLUMBIA, SC 29201

STANDARD DRAWING

FLAGGING OPERATIONS
TWO-LANE TWO-WAY ROADWAYS WITHOUT INTERSECTIONS

610-005-10
EFFECTIVE LETTING DATE: JAN 2016